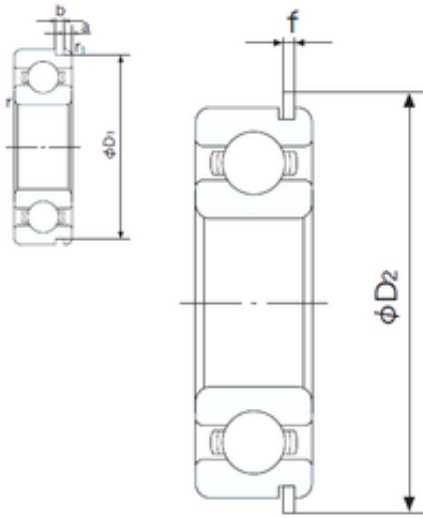




## BEARING USA CORP.



110 mm x 170 mm x 28 mm EE8 Bearing 22.225  
X47.625x12.7mm

Bearing No. 6022NR

6022NR Bearing 2D drawings and 3D CAD models

Size	110x170x28 mm
Bore Diameter	110 mm
Outer Diameter	170 mm
Width	28 mm
d	110 mm
D	170 mm
B	28 mm
C	28 mm
a	3.71 mm
b	3.5 mm
f	3.1 mm
r min.	2 mm
r1 min.	0.5 mm
D1	163.65 mm
D2	182.9 mm
Weight	1.91 Kg
Basic dynamic load rating (C)	84,5 kN
Basic static load rating (C0)	73 kN
(Grease) Lubrication Speed	3800 r/min
Bore Type	Cylindrical Bore
Configuration	Single Row
Enclosure	Snap Ring Groove with Snap Ring
Bore Size	110 mm
Outside Diameter	170 mm



## BEARING USA CORP.

Width	28 mm
Fillet Radius/Chamfer	2 mm
r1	0.5 mm
Snap Ring Width	3.1 mm
Snap Ring Outside Diameter	182.9 mm
D1 (max)	163.7 mm
a (max)	3.7 mm
b (min)	3.5 mm
Dynamic Load Rating	84,500 N
Static Load Rating	73,000 N
Limiting Speed - Grease	3,800 rpm
Limiting Speed - Oil	4,500 rpm
Factor fo	15.5
Radial Clearance	0.015 to 0.041 mm
da (min)	118 mm
Da (max)	162 mm
Dx (min)	185 mm
ra (max)	2 mm
Cy (max)	6.4 mm